

# Performance 1 FT

Full-Tower E-ATX Highly Compatible PC Case

## SYSTEM STATUS WITH A GLANCE

### TEMPERATURE DISPLAY

By pressing the switch button on the I/O panel, users can glance at the temperature of the CPU and GPU on the temperature display. The temperature display can be switched from CPU temperature to GPU temperature or turned off by the switch button.

Attention: The Antec iUnity software must be installed.

## ANTEC iUNITY

The Antec iUnity provides instant data on PC specs, loads, and usage.

[Download](#)



### DRIVE STATUS

When installing SATA/SAS hard drive, the screen will show the drive as a record for recording.

### PC SHOWCASE

## 4MM TEMPERED GLASS SIDE PANEL

Both side panels adopt tempered glass for better PC showcase visual effects.



### EVERYTHING ORGANIZED

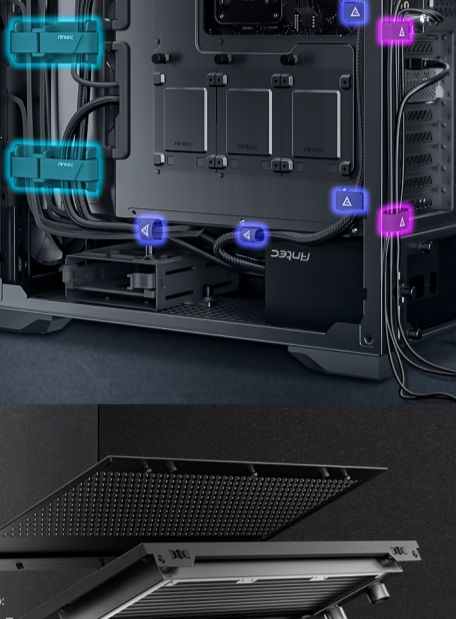
## CABLE MANAGEMENT ON POINT

2 cable covers are included for beautifying the cable management area.



There are ten sets of velcro straps for easy cable management.

- 1 Three sets of velcro straps for fan & I/O cable routing.
- 2 Five velcro straps for hardware and power supply cables.
- 3 Two velcro straps at the rear for rear I/O cable routing.



Clearance for Cable Management: 30mm

## EASY INSTALLATION

Removable Top Cooling Bracket.



### PRE-INSTALLED 4 FANS OF 30MM THICKNESS

## STORM T3 PWM FAN

3 x Storm T3 140mm PWM Fans at the Front.  
1 x Storm T3 120mm PWM Fan at the Rear.



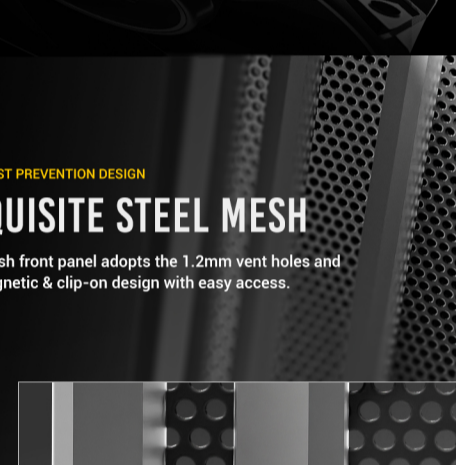
A 1-to-3 fan splitter cable with the PWM function is included.



### BEST DUST PREVENTION DESIGN

## EXQUISITE STEEL MESH

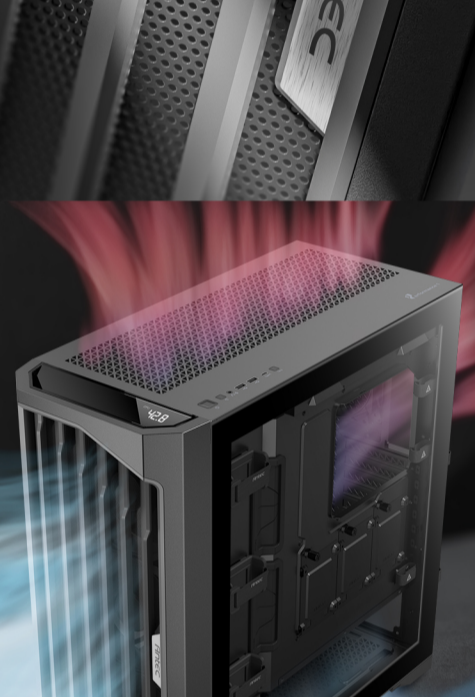
The mesh front panel adopts the 1.2mm vent holes and the magnetic & clip-on design with easy access.



### POWERFUL AIRFLOW PATH DESIGN

## BEST AIRFLOW PATH FOR GPU PANEL

Airflow-enhancing mesh at the bottom provides massive air. The drop-proof hook design at the meshed PSU shroud provides the best performance for the GPU cooling.



### TEMPERATURE TEST

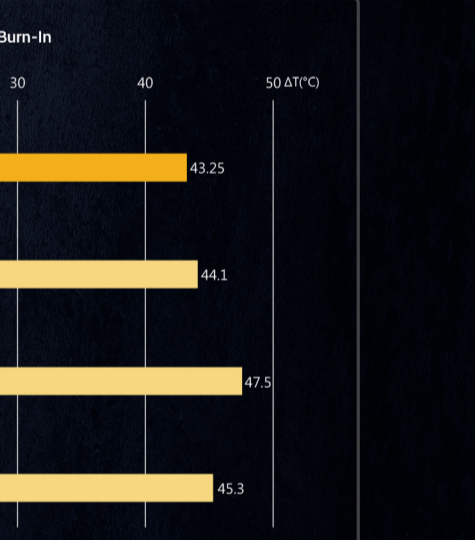
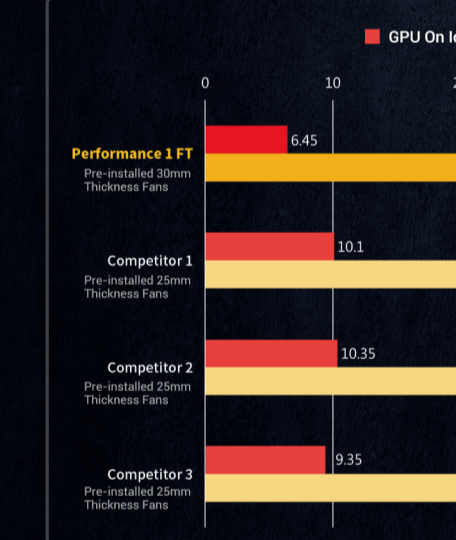
## AMD-3600X / NH-U12A / MSI 3070 GAMING X TRIO



### HIGHLY COMPATIBLE FULL-TOWER PC CASE

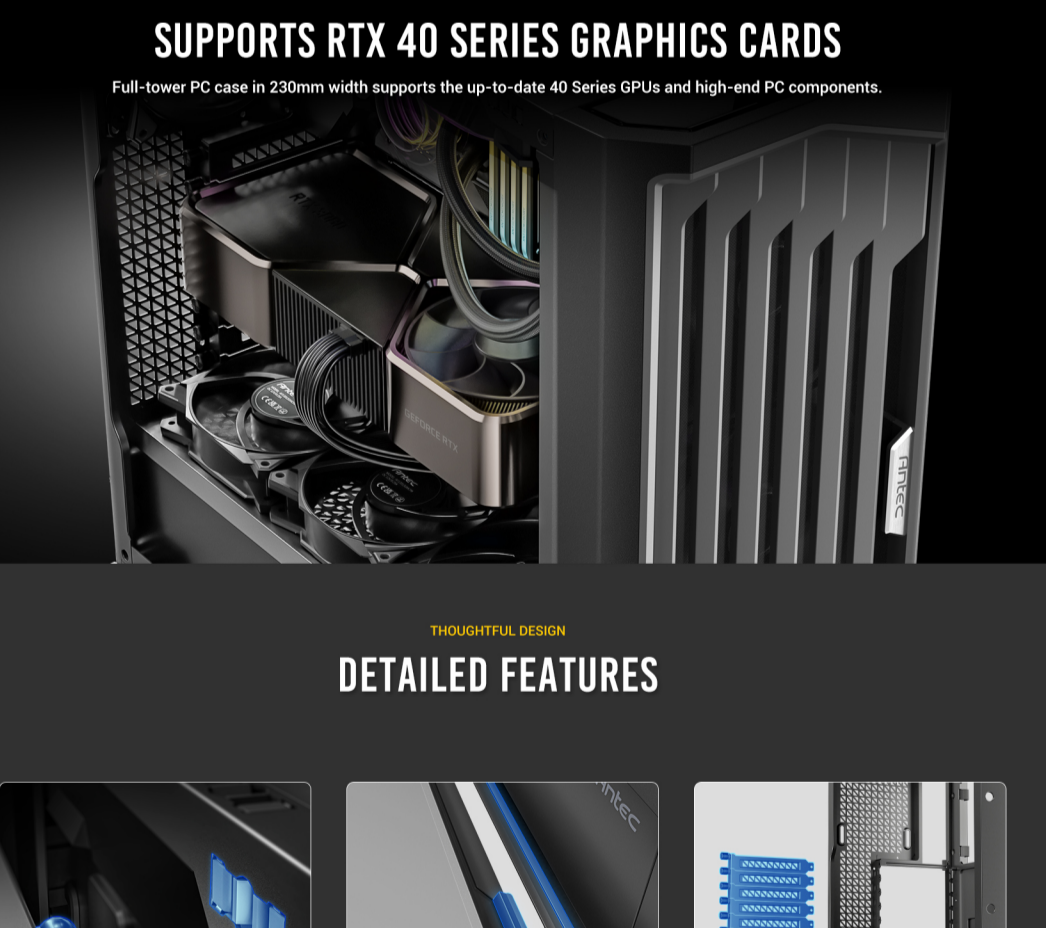
## SUPPORTS RTX 40 SERIES GRAPHICS CARDS

Full-tower PC case in 230mm width supports the up-to-date 40 Series GPUs and high-end PC components.



### THOUGHTFUL DESIGN

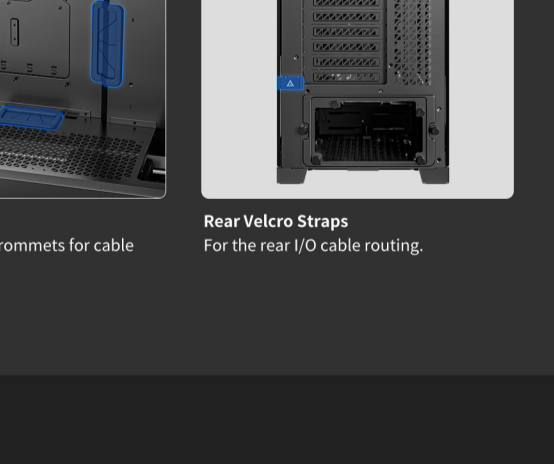
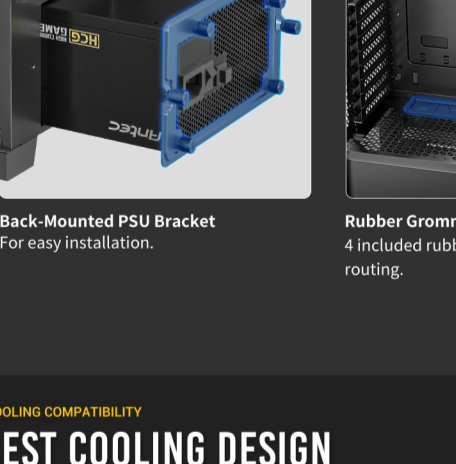
## DETAILED FEATURES



### COOLING COMPATIBILITY

## BEST COOLING DESIGN

- Support a 420mm radiator at the front. (When installing a 420mm radiator at the front, the radiator at the top must be less than 360mm.)
- Supports 360mm radiators at the front and top simultaneously.
- Up to 10 fans simultaneously.



### STORAGE COMPATIBILITY

## MODULAR DRIVE TRAYS

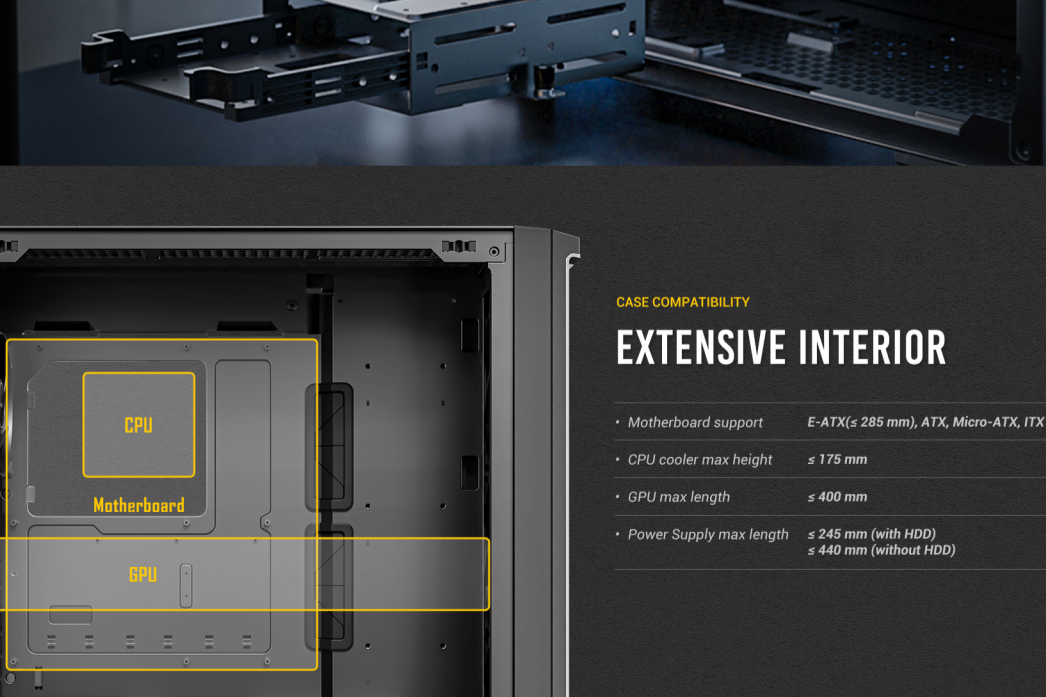
Supports up to 5 drives: 2 removable drive trays for 3.5" HDD/2.5" SSD & 3 drive trays for 2.5" SSD.



### CASE COMPATIBILITY

## EXTENSIVE INTERIOR

- Motherboard support: E-ATX (≤ 285 mm), ATX, Micro-ATX, ITX
- CPU cooler max height: ≤ 175 mm
- GPU max length: ≤ 400 mm
- Power Supply max length: ≤ 245 mm (with HDD) / ≤ 440 mm (without HDD)



## SPECIFICATION

Main Spec		Radiator Support	
Motherboard Support	E-ATX(Up to 285 mm), ATX, Micro-ATX, ITX	Front	Up to 420 mm
Form Factor	Full Tower	Top	Up to 360 mm
Case Material	Steel, Plastic, Glass	Rear	Up to 120 mm
Side Window Material	4mm Tempered Glass (Both Sides)	Expansion Slots	
I/O Ports	Power, Reset, USB 3.0 x 2, Type-C 10Gbps x 1, Headphone/Mic Combo Jack x 1, Temp. Display Switch x 1	Standard	
Case dimensions (DxWxH)	522 x 230 x 532 mm	8	
Box Dimensions (DxWxH)	595 x 305 x 603 mm	Drive Bays	
Compatibility & Clearances		2.5" 3	
CPU Cooler Max Height	≤ 175 mm	3.5"/2.5" Drive Mounts 2/2	
GPU Max Length	≤ 400 mm	General	
Power Supply Max Length	≤ 245 mm (with HDD)	Dust Filter	
Cable Routing Space	≤ 440 mm (without HDD)	Front, Top, Bottom	
Fan Support		Net weight	
Front	120 mm x 3 / 140 mm x 3	12.55 kgs	
Top	120 mm x 3 / 140 mm x 3	Gross weight	
Rear	120 mm x 3	14.85 kgs	
Power Supply Shroud	120 mm x 3	Warranty	
Included Fans	140 mm Storm T3 x 3 (in front) 120 mm Storm T3 x 1 (in rear) *Pre-installed Storm T3 PWM fan specs vary from the retail version.	2 years	
		UPC#	
		0-761345-10068-5	