



## S90 RGB

With its 360 mm radiator, the S90 RGB is a compact all-in-one water-cooling system that provides efficient cooling for all CPUs. Apart from providing visual highlights in 16.7 million colors, the addressable RGB PWM fans also ensure good cooling performance with a speed of up to 2,000 rpm. Installation is easy, thanks to the flexible, textile-braided tubing and the supplied mounting brackets.

### Features

#### FULL FAN CONTROL

The three RGB PWM fans that belong to the S90 RGB's 360 mm radiator not only have fully addressable RGB illumination, but their speed can also be controlled within a range from 600 rpm to 2,000 rpm. And for easy cable management, the fans can be daisy chained. Also the pump has PWM control for optimal performance and low noise volume.

#### BEST POSSIBLE HEAT DISSIPATION

Like the fans, the water block and pump unit is also equipped with RGB illumination and presents itself with a chic infinity mirror effect. The copper plate and the supplied high-quality DOWSIL™ thermal paste ensure the best possible heat dissipation.

#### COMPATIBLE WITH ALL CPUS

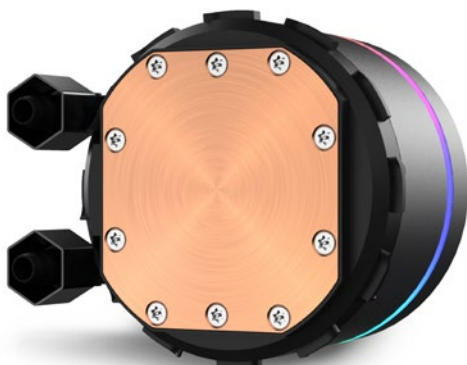
Thanks to the two enclosed mounting brackets for CPUs of all manufacturers, this all-in-one water-cooling solution is optimally prepared for direct use in the PC case.

#### FLEXIBLE AND EASY TO INSTALL

Via the flexible tubing, installation in the PC case is as uncomplicated as possible. The tubing is textile braided for optimal protection against scratches.

#### ROTATABLE SHARCOON LOGO

In order to ensure that the Sharkoon logo is always horizontal, it can be easily rotated to the desired position on the water block and pump unit.



### Specifications

Product Name	S90 RGB
CPU Socket Compatibility	Intel® Socket LGA 115X / 1366 / 1200 / 1700 / 2011 / 2011-3 / 2066 (Core i3 / i5 / i7 / i9) AMD® TR4 / TRX4 / AM5 / AM4 / AM2 / FM2 / FM1 / AM3+ / AM2+ / AM2

Weight	1.86 kg
--------	---------

#### Water Block & Pump

Dimensions	Ø 71.5 mm x 52.3 mm
Weight	1.07 kg
Cold Plate Material	Copper
Max. Pump Speed	1,600 ~ 3,200 ± 200 rpm
Rated Voltage (Pump)	12 V
Rated Voltage (LEDs)	5 V
Rated Current (Pump)	0.35 A
Rated Current (LEDs)	0.8 A
Rated Power (Pump)	4.2 W
Rated Power (LEDs)	4.0 W
Pump Connector	4-Pin PWM
LED Connector	4-Pin (5V-D-coded-G)

#### Radiator

Type	Brazed Radiator
Dimensions (L x W x H)	392 x 121 x 27.5 mm
Material	Aluminium Alloy

#### Tubing

Length	400 mm
--------	--------

#### Fans:

Number of Fans	3
Dimensions (L x W x H)	120 x 120 x 25 mm
Fan Speed	600 ~ 2,000 rpm ± 200 rpm
Max. Airflow	131.93 m³/h
Max. Air Pressure	2.90 mmH₂O
Max. Noise Level	35 dB(A)
Illumination	12x Addressable RGB LED
Rated Voltage (Fan)	12 V
Rated Voltage (LEDs)	5 V
Rated Current (Fan)	0.21 A
Rated Current (LEDs)	0.54 A
Rated Power (Fan)	2.52 W
Rated Power (LEDs)	2.7 W
Fan Connector	4-Pin PWM
LED Connector	4-Pin (5V-D-coded-G)
Fan Cable Length	450 mm
LED Cable Length	450 mm

#### Package Contents

S90 RGB, AMD® Mounting Bracket, Intel® Mounting Bracket, Manual, Metal Backplate, Mounting Screws, Thermal Paste (DOWSIL™ TC-5888)

#### EAN Code

S90 RGB	4044951038015
---------	---------------



