

STORM

120mm Case Fan



Spiral Fan Structure for Better Airflow



Fluid Dynamic Bearing Fan



PWM Daisy-Chain Design



HIGHLY EFFICIENT CASE FAN

The Storm 120 is a highly efficient case fan featuring a flow concentration design, FDB bearing fan, and spiral fan structure. The Storm 120 will bring you incredible cooling performance.

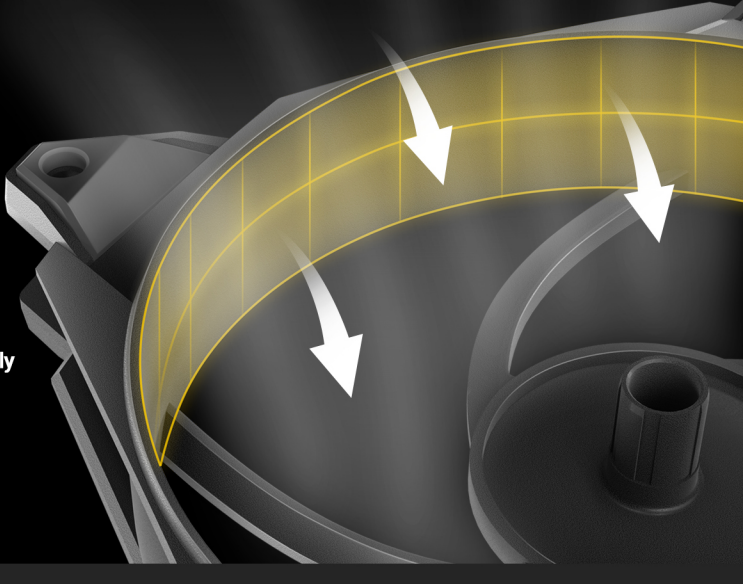


SPIRAL FAN STRUCTURE

The spiral fan structure is designed for better airflow.

FLOW CONCENTRATION DESIGN

The well-processed fan structure can efficiently reduce noise and enhance airflow.



4-Pin Male Connector

Connect it to the motherboard

4-Pin Female Connector

Connect the other fans in tandem

Long Cable: 13cm
Short Cable: 7cm

PWM DAISY-CHAIN DESIGN

The Daisy-chain design makes cable management more easily and allows you to install multiple fans in tandem.

• An Extension Cable Included

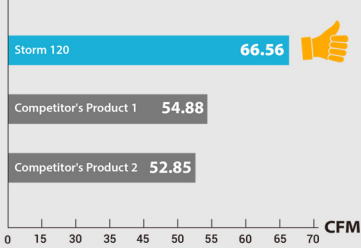
Durable Woven Wire

The cable is covered with durable woven wire to enhance the lifetime & create unique aesthetics.

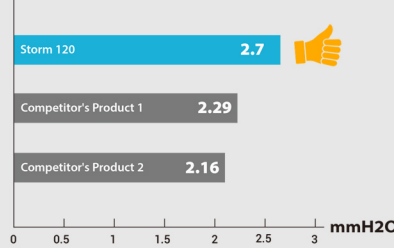
OUTSTANDING PERFORMANCE

Fan Speed: All at 2000RPM

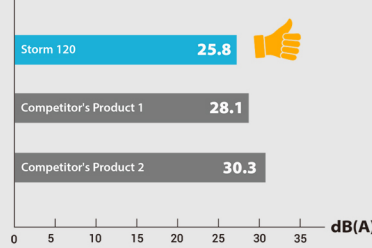
AIRFLOW



AIR PRESSURE

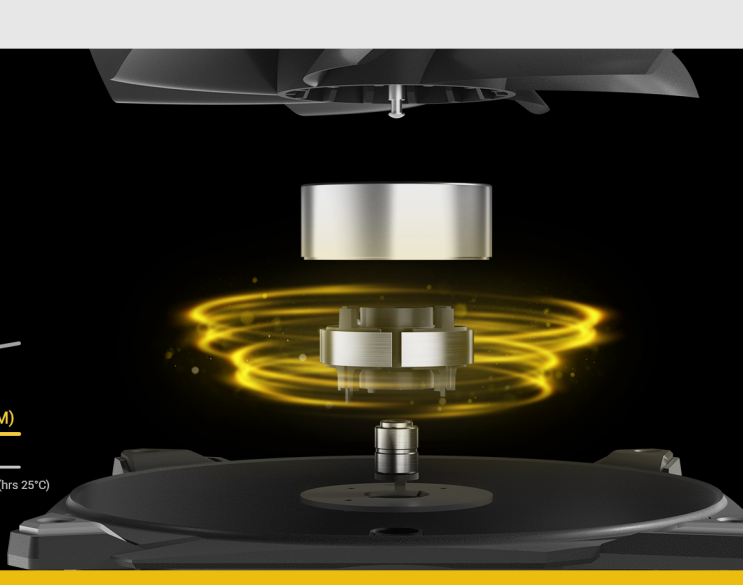
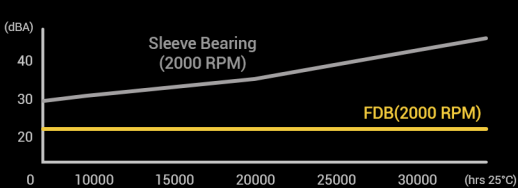


NOISE LEVEL



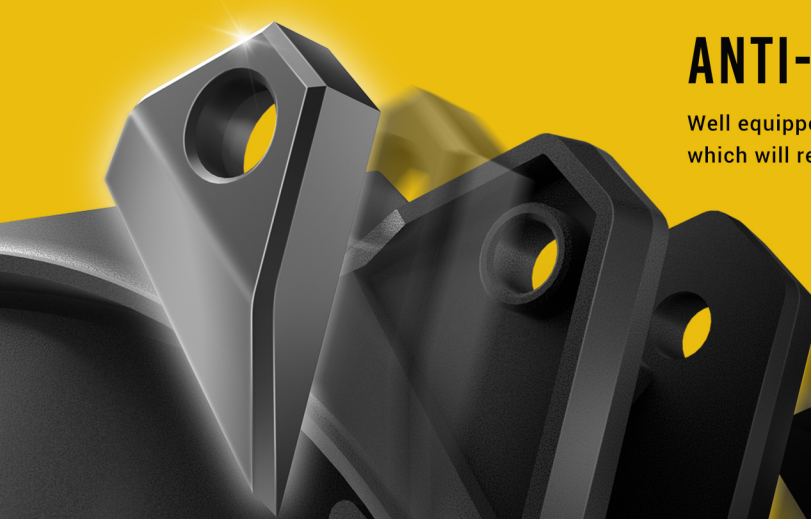
FLUID DYNAMIC BEARING FAN

The FDB bearing fan can extend durability and lifespan.



ANTI-VIBRATION PADS

Well equipped with 8 anti-vibration pads, which will reduce vibration and noise.



PACKAGE



Storm 120 Single Pack

Storm 120 2 in 1 Pack (Amazon Only)

Storm 120 3 in 1 Pack

Storm 120 5 in 1 Pack (Amazon Only)

SPECIFICATION

Fan Type	PWM Fan
Dimensions	120 x 120 x 25 mm (DWH)
Bearing Type	FDB Bearing
LED Type	N/A
Fan Speed	600~2000 RPM
Airflow	66.56 CFM (max.)
Air Pressure	2.7 mmH ₂ O (max.)
Fan Noise Level	11.4~34.9 dB(A)
Lifespan	80,000 hours
Connector	4-pin PWM
Rated Voltage	DC 12 V
Operation Voltage	DC 10.8-13.2 V
Rated Current	0.20 A (max.)
Warranty	3 Years
UPC#	Storm 120 / 0-761345-74037-1 Storm 120 x 3 / 0-761345-57007-7