



CX700 ARGB

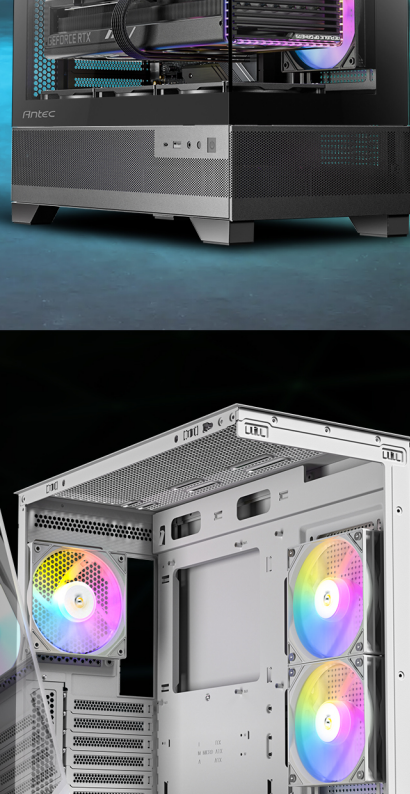
CX700 ARGB WHITE

Mid-Tower Gaming Case



PANORAMIC 270° VIEW

Standing out with full-view design on the seamless 4mm steel-tempered glass, CX700 ARGB's left and front panel offer an unobstructed view of your build, creating a stunning showcase for your components.



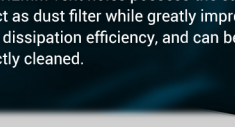
STUDS FOR FIXING

TOOL-FREE PANELS

Front and side panel adopt fixing stud design, which makes assembly and disassembly easier and helps avoid possible glass breakage.

VERTICAL COOLING WITH MASSIVE AIR INTAKE

Bottom-up vertical airflow via mesh on lower front, lower left, and right side accelerates the heat dissipation.



The 1.2mm vent holes possess the same effect as dust filter while greatly improving heat dissipation efficiency, and can be directly cleaned.

DISPLAY WITH ARGB FANS

9 fan positions with 2 pre-installed reverse fans provide great airflow and aesthetic appeal.



PRE-INSTALLED 3 x 120mm ARGB PWM FANS



REAR
1 x 120mm ARGB fan

REVERSE
SIDE
2 x 120mm ARGB reverse fans



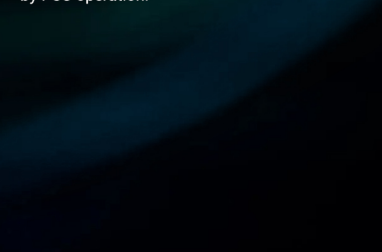
360mm Radiator

SUPPORT 2 X WATER COOLER

Support simultaneous installation of 360mm radiator on top and 240mm radiator on side.

When installing a 240mm radiator on the side, the length of the graphics card is limited to 270mm.

240mm Radiator



EVA PSU CUSHION PADS

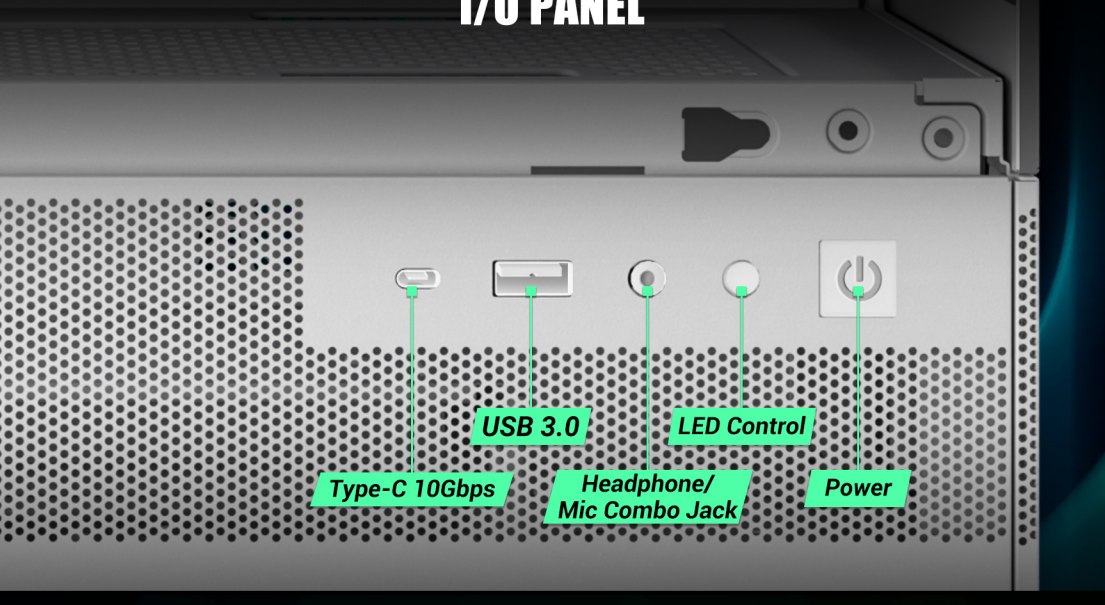
With EVA anti-vibration foams on the power supply mount position, your lovely PC hardware is well protected against any jar or resonance caused by PSU operation.

FULL REUSABLE PCI SLOT COVERS

Reusable PCI slot covers fulfill an optimal build experience.

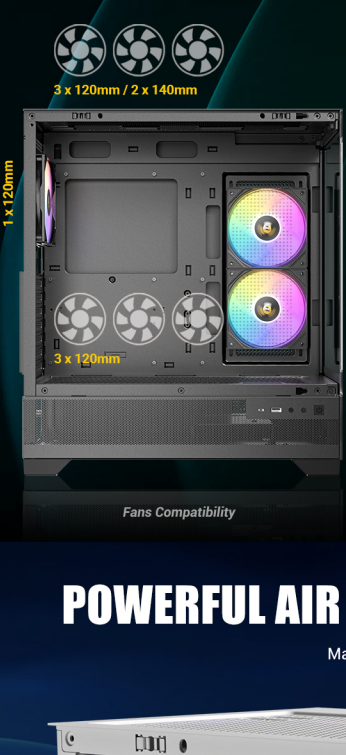


I/O PANEL

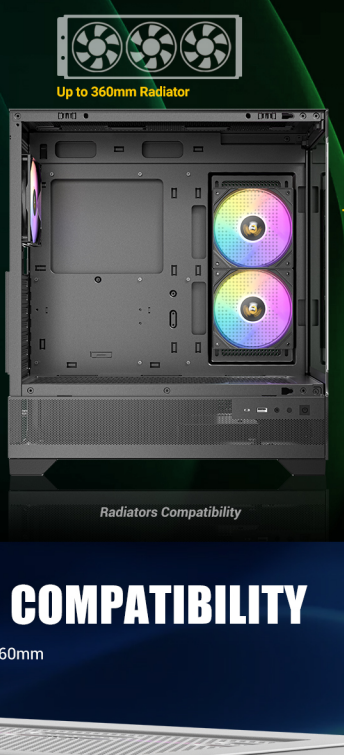


UP TO 9 FANS SIMULTANEOUSLY

When installing a 240mm radiator on the side, the length of the graphics card is limited to 270mm.



Fans Compatibility



Radiators Compatibility

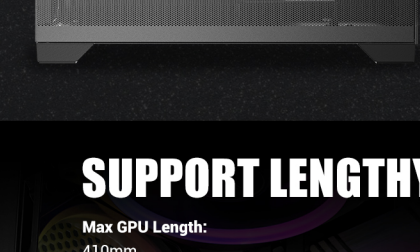
POWERFUL AIR COOLING COMPATIBILITY

Max. CPU Cooler Height: 160mm



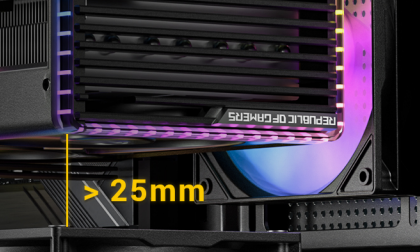
COMPATIBILITY

- Motherboard support: ATX, Micro-ATX, ITX
- CPU cooler max height: ≤ 160mm
- GPU max length: ≤ 410mm (When water cooling is installed on the side) / ≤ 270mm (Without HDD cage) (Not include cable)
- Power Supply max length: ≤ 210mm (With HDD cage) (Include cable) / ≤ 270mm (Without HDD cage) (Not include cable)
- Expansion Slots: Standard 7
- Box Dimensions: 436 x 210 x 486mm (DWH)
- Net Weight: 6.9kg
- Gross Weight: 8.6kg



SUPPORT LENGTHY RTX 40 SERIES GPU

Max GPU Length: 410mm / 270mm (When water cooling installed on the side)



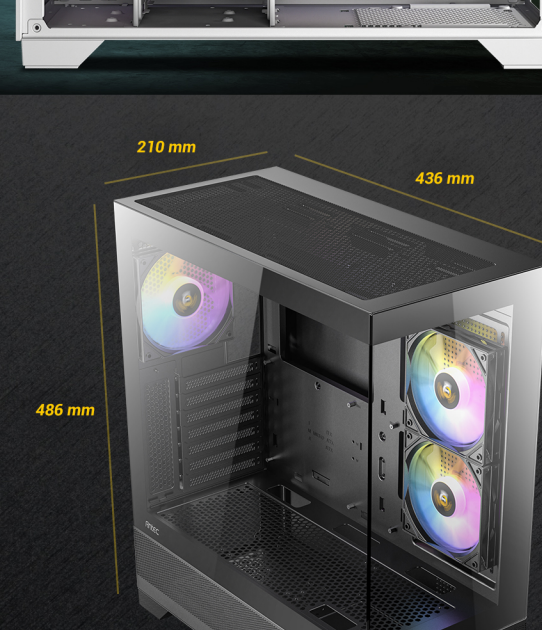
> 25mm

MORE SPACE THAN YOU THINK

Still plenty of room for heat dissipation between the thick RTX 40 graphics card and PSU shroud fans.

AMPLE CABLE MANAGEMENT SPACE

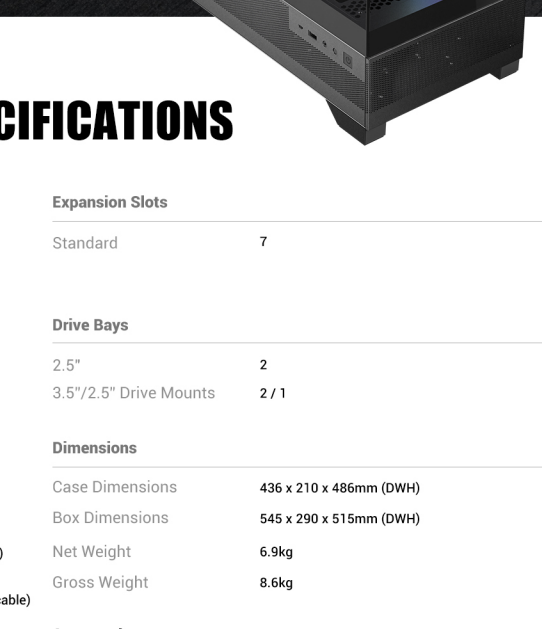
23mm of cable management space ensures your PC build looks neat.



23mm

DIMENSIONS

436 x 210 x 486mm (DWH)



210 mm

436 mm

486 mm

SPECIFICATIONS

Main Spec	Expansion Slots
Motherboard Support: ATX, Micro-ATX, ITX	Standard: 7
Form Factor: Mid Tower	
Case Material: Steel + Glass	Drive Bays
Side & Front Panel: 4mm Tempered Glass	2.5": 2
I/O Ports: Power, LED Control Button, USB 3.0 x 1, Type-C 2.0 Gen 2 x 1, Headphone/Mic Combo Jack	3.5"/2.5" Drive Mounts: 2/1
Compatibility & Clearances	Dimensions
CPU Cooler Max Height: ≤ 160mm	Case Dimensions: 436 x 210 x 486mm (DWH)
GPU Max Length: ≤ 410mm (When water cooling is installed on the side) / ≤ 270mm (Without HDD cage) (Not include cable)	Box Dimensions: 545 x 290 x 515mm (DWH)
Power Supply Max Length: ≤ 210mm (With HDD cage) (Include cable) / ≤ 270mm (Without HDD cage) (Not include cable)	Net Weight: 6.9kg
Cable Routing Space: ≤ 23mm	Gross Weight: 8.6kg
Fan Support	Accessories
Top: 3 x 120 / 2 x 140mm	Included Fans: 2 x 120mm ARGB PWM reverse fans on right side + 1 x 120mm ARGB PWM fan in rear
Side: 2 x 120mm	General
Power Supply Shroud: 3 x 120mm	Dust Filter: Top / Bottom
Rear: 1 x 120mm	Warranty: 1 year
Radiator Support	UPC#: 0-761345-10120-2 CX700 ARGB / 0-761345-10132-5 CX700 ARGB White
Top: 120/140/240/280/360mm	
Side: 120/240mm	

