



MIN-MAXING YOUR BUILD

Want to maximize your PC's performance and save on space at the same time? Cooler Master's NCORE 100 MAX is the ultimate solution for going big on performance in the minimal amount of desktop space

True to our MAX series naming we have brought together a customized integrated cooling solution that will tame even the highest end CPUs for Gaming loads. The efficient thermal layout and ample and transformable space allow the mounting & cooling of almost all of the latest gen Top-of-the-line Graphics cards like the RTX4090. Despite this high-end spec, we have made it easy to build and achieve this level of performance with pre-routed cables, toolless mounting and unobstructed access to the components.

Max out your performance using the minimum amount of effort with the NCORE 100 MAX.


NCORE 100 MAX

The MAX, revolutionized – The NCORE 100 MAX represents the next generation of Cooler Master's MAX series. The NCORE carries on the series' legacy: ease of installation, exclusive aesthetics and high performance, by integrating a Tailor-made extra thick 120mm radiator plus a Custom ATX 3.0 PSU.

MINimum Footprint, MAXimum performance – At only 212mm x 155mm, the NCORE 100 MAX has only about the footprint of an A5 sheet of paper. Yet, it can house almost all latest components on the market. Something you can rarely find among Small-Form-Factor(SFF) cases.

Ultimate transformation– Transform your machine with an expandable body that increases the overall width from 155mm to 172mm, providing space for some of the largest RTX 4090 even.

Small form factor made accessible – With a volume of merely 15.7 liters, pre-routed cables, comprehensive hardware compatibility and unprecedented open access, the NCORE 100 MAX is PC building made simple.



MAX

FEATURE HIGHLIGHTS



High-end ITX design

At a volume of 15.7 liters and with premium Cooler Master cooling and power solutions, the NCORE 100 MAX satisfies all your performance and space-saving needs.



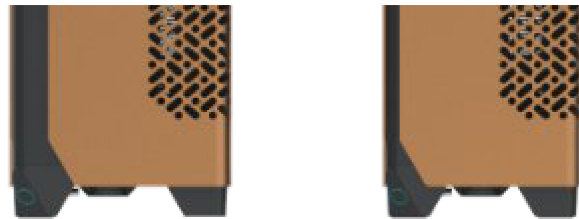
Ultra small footprint

NCORE100 Max footprint is 212*155mm (3slots mode) , which is **15.3%** smaller than Mac mini . perfect choice to save your desk space



Support for the latest GPUs

Includes support for high performance, triple-slot GPUs up to 337mm in length and 180mm in height, with included ATX3.0 power cables and a vertical mount design. The PCIe slot can be adjusted for even larger GPU up to 357mm length.



Extendable width

Extendable width from 155mm to 172mm allows for 3.9 GPU slot thick RTX 4090 compatibility or 3 slot width for a super-small form factor.

Premium aluminium paneling

An anodized aluminium shell makes the NCORE 100 MAX stand out as a desktop work of art.

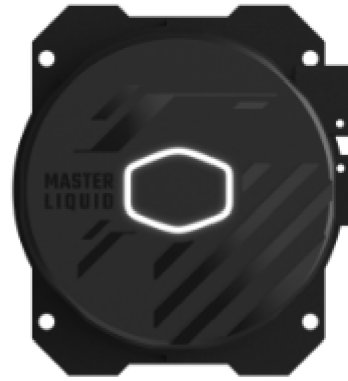


FEATURE HIGHLIGHTS



Tailor-made power solution

Cooler Master's V SFX Gold 850W ATX 3.0 PSU covers all your power needs and comes with custom length cables.



High performance cooling solution

A custom thick radiator 120mm AIO cooling solution works well with the latest i9 and R9 CPUs and features both AMD AM4 and Intel LG1700 sockets.



Tool-less technology

The fully tool-less opening mechanism allows you easily access to every part of the N100 MAX.



PCIe 4.0 cable Included

A specially tailored PCIe 4.0 cable enables extra easy installation.

SPECIFICATIONS

Product Name	NCORE 100 MAX		NCORE 100 MAX Bronze edition
Product Number	NR100-MN85-SL0 NR100-MN85-SL1		NR100-ZN85-SL0 NR100-ZN85-SL1
Exterior Color	Dark grey		Bronze
Materials	Exterior	Steel, Plastic, Aluminum	
	Side Panel	Aluminum	
Dimensions (L x W x H)	Incl. Protrusions	155mm x 212mm x 481mm (Normal mode) 172mm x 212mm x 481mm (Expansion mode)	
	Excl. Protrusions	155mm x 212mm x 457mm 172mm x 212mm x 457mm	
Volume (Liters Incl. Protrusions)	15.80L / 17.54L		
Motherboard Support	ITX		
Expansion Slots	3 x PCIe Slot mounting		
Drive Bays	5.25" ODD	N/A	
	3.5" HDD	N/A	
	2.5" SSD	1	
I/O Panel	USB Ports	USB 3.2 Gen1 Type A x 2, USB 3.2 Gen2 x 2 Type C x 1	
	Audio In / Out 3.5mm	Audio combo x 1	
Included Riser Cable	240mm PCIe 4.0 x16 x 1		
Included CPU Cooling Solution	120mm Radiator with 38mm thickness x 1 (Custom PWM fan max.2400RPM)		
Included Power Supply Unit	V SFX Gold 850W ATX3.0		
Pre-installed Fan(s)	Rear	120mm SickleFlow PWM fan x1(max. 1800RPM)	
Clearances	CPU Cooler	48 mm	
	Power Supply	100 mm	
	RAM	48 mm	
	Graphics Card	337mm x 62mm x 180mm (Normal, 3.0 Slot thick) 357mm x 79mm x 180mm (Expansion, 3.9 Slot thick) (Maximum space including GPU power connector)	
Cable Routing	Behind MB Tray	11 mm	
Dust Filters	Side panels		
Power Supply Support	SFX		
Warranty	2 years (Case), 2 years (Thermal Solution), 10 years (Power Delivery)		

PACKING INFORMATION

EAN code	NR100-MN85-SL0 : 4719512143582, 6928968319122(CN) NR100-MN85-SL1 : 4719512143605 NR100-ZN85-SL0 : 4719512143599, 6928968319139(CN) NR100-ZN85-SL1 : 4719512143612
UPC code	NR100-MN85-SL0 : 884102115905 NR100-MN85-SL1 : 884102115929 NR100-ZN85-SL0 : 884102115912 NR100-ZN85-SL1 : 884102115936
Net weight (KG)	6.30
Gross weight (KG)	8.40
Carton dimension (L x W x H)mm	570 x 298 x 275

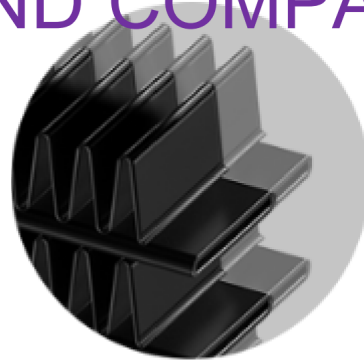
Cont.	W/ Pallet	Carton/ Pallet	W/O Pallet
20'	462	42	624
40'	924	42	1288
40 HQ	1056	48	1449

COOLING EFFICIENCY BEYOND COMPARE



New Dual Chamber Gen S

Water flow and pressure have been enhanced in combination with the new customized copper base to precisely target heat spots.



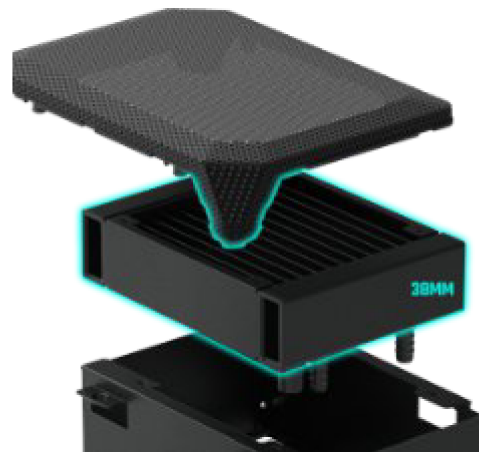
Larger Surface Area

Increased surface area of the radiator fins improve heat dissipation.



Tailor made Fan

Higher RPM than regular Silencio Fan



Customized radiator

A customized 38mm thick radiator exclusive for NCORE 100 MAX only.



CryoFuze Thermal Paste

Included premium CryoFuze thermal paste for even better heat conductivity.

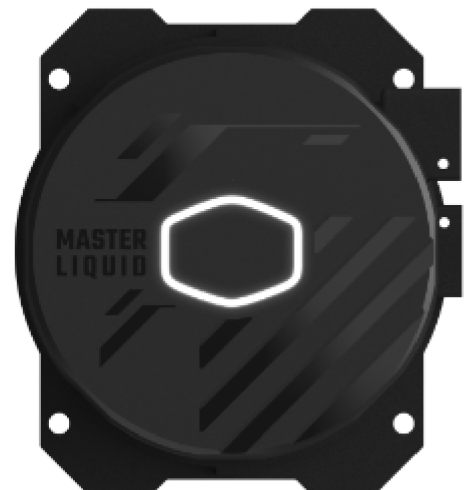
SPECIFICATIONS

All-In-One Watercooling Solution

Exterior Color		Black
CPU Socket	Intel	Intel® LGA 1700 / 1200 / 1151 / 1150 / 1155 / 1156 / socket
	AMD	AMD® AM5 / AM4 / AM3+ / AM3 / AM2+ / AM2 / FM2+ / FM2 / FM1 socket
Radiator	Material	Aluminum
	Dimensions (L x W x H)	158.8 x 119.2 x 38 mm(6.3 x 4.7 x 1.5 inch)
Pump	Dimensions (L x W x H)	81 x 76 x 47 mm (3.2x 3 x 1.9 inch)
	MTTF (Hours)	70,000 hours
	Noise Level (dBA)	<12dBA
	Connector	3-Pin
	Rated Voltage (VDC)	12
	Power Consumption (W)	3.96 W
Warranty		2 years

Included Fans

Dimensions (L x W x H)	120 x 120 x 25 mm (4.7 x 4.7 x 1 inch)
LED Type	Non-LED
Speed (RPM)	800~2400RPM ± 10%
Airflow (CFM)	16.5 - 76 CFM ± 10%
Noise Level (dBA)	6.5 ~27 dBA
Pressure (mm H2O)	0.48 – 4.8 mm H ₂ O ± 10%
Life Expectancy (Hours)	160,000 hours
Power Connector	4-Pin(PWM)
Rated Voltage (VDC)	12
Rated Current (A)	0.16A
Warranty	2 years



PERFORMANCE UNBOUNDED



V Gold Technology Based

Cooler Master celebrated VGold power solutions are renowned for extraordinary performance delivery and high reliability, capable of satisfying all levels of performance needs.



Quiet FDB Fan

The 92mm FDB fan delivers quiet, and highly efficient cooling.



Full-Modular Cabling

Full modular cables reduce clutter, minimize the hassle of cable management, while allowing users to keep the airflow path efficient and obstruction-free.



80 PLUS Gold Certified

80 PLUS Gold certified PSUs guarantee an average power delivery efficiency of 90% under standard operating conditions.



Fully support ATX3.0

Fully support ATX3.0 with Peak power 200% & 450W output 12VHPWR native cable.



10-Year Warranty

This unit comes with a standard limited manufacturing warranty of 10 years from the date of purchase.

SPECIFICATIONS

Included Power Supply Specifications

ATX Version	ATX3.0 & SFX 12V Ver. 3.42				
PFC	Active PFC				
Input Voltage	100-240V				
Input Current	12-6A				
Input Frequency	50-60Hz				
Dimensions (L x W x H)	100 x 125 x 63.5mm				
Fan Size	92mm				
Fan Bearing	FDB				
Efficiency	90% @ Typical Load				
80 PLUS Rating	80 PLUS Gold				
ErP 2014 Lot 3	Yes				
Operating Temperature	0~50°C				
Power Good Signal	100-500ms				
Hold Up Time	16ms				
MTBF	>100,000 hours				
Protections	OVP / OPP / SCP / OCP / UVP / OTP / Surge and Inrush Protection				
Regulatory	TUV, cTUVus, CE, BSMI, FCC, CCC, EAC, RCM, CB, UKCA				
Connectors	ATX 24 Pin	x1			
	EPS 8 Pin	x1			
	SATA	x2			
	PCI-e 6+2 Pin	x3			
	12VHPWR	x1			
AC INPUT	100~240V~, 12~6A, 50~60Hz				
DC OUTPUT	+5V	+3.3V	+12V	-12V	+5VSB
	20A	20A	70.8A	0.3A	3A
TOTAL POWER	120W		849.6W	3.6W	15W
	850W				

