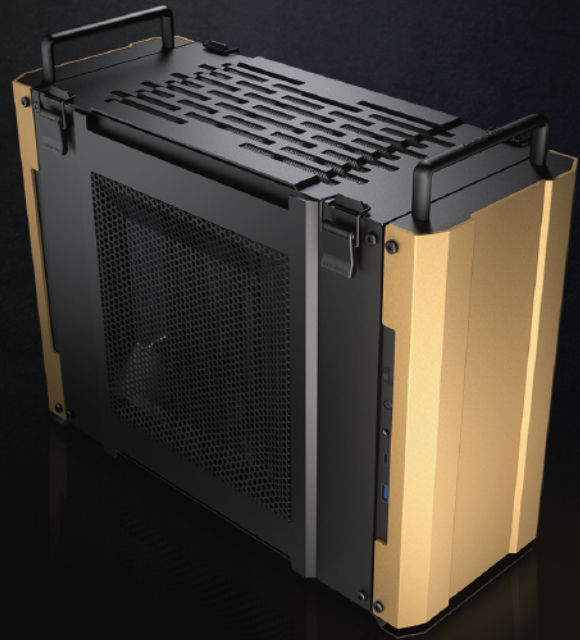




# DUST 2

*The Portable and Powerful Mini-ITX case*

COUGAR **DUST 2** features military style. It is a Mini-ITX case with optimal compatibility, which is born for travelling gamers and LAN Party dominance. Just grab your rig and go!



## Sturdy and Solid Aluminum Panels

The front and back panels are anodized aluminum with a sandblasted finish. It is designed with minimalist style, which is forged with fine aluminum alloys and folding angles. It looks fantastic wherever you place it.



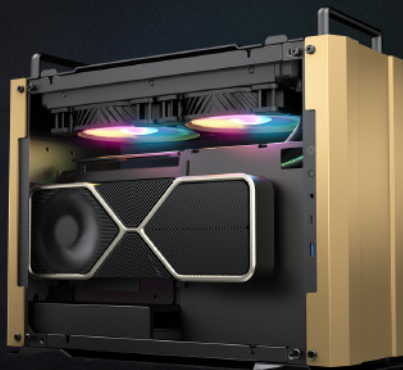
## Excellent Cooling Solution

Dust 2 comes with excellent cooling among Mini ITX cases. The small form factor is able to house a 280mm water cooling radiator. Its' Pro-cooling design provides the best defense against overheating.



## Top-notch Performance

Unlike some of the other Mini ITX cases on the market, Dust 2 supports powerful hardware system with full-sized vertical GPU (up to 330mm) and PSU (160mm PS2 ATX).



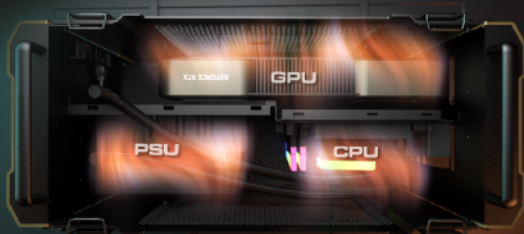
## Easy Access to Multiple Devices

With a PCIe 16x Gen3 High-Speed Riser Card and a USB 3.1 Gen-2 Type-C connector, Dust 2 can connect to the latest devices. It also brings high-speed connections to fulfill massive data transfer needs for the ultimate PC enthusiast.



## Independent Ventilation Zones

In contrast to traditional PC layouts gather all the components at the same side, Dust 2 has divided into two individual parts. GPU, CPU, and PSU have independent ventilation zones, which is able to effectively avoid thermal interference between each other.



## Separate Airflow Paths

Dust 2 comes with mesh side panels to bring maximum airflow. The divided layout creates two unobstructed airflow paths from side intake to top exhaust. GPU, CPU, and PSU have separate cooling solutions, which helps you to protect critical components from overheating





# DUST 2

The Portable and Powerful Mini-ITX case



SPACE SILVER

IRON GRAY

DESERT SAND

## Carry Handles Make Carriage a Breeze

When you want to go to a LAN party or play PC games in the living room, Dust 2 has two comfortable handles to make carry easy as a breeze.



## SPECIFICATIONS

Product Name	DUST 2		Expansion Slots	2 (A PCIe 16x Gen3 high-speed riser card included)
Case Form Factor	Small Form Factor		Cooling Fan Support	Top : 120mm x 2 / 140mm x 2
Motherboard Type	Mini ITX		Maximun Number of Fans	2 Max.
Volume	Exclude Handles and Bottom Feet: 19.5 Liter		Water Cooling Support	Top : *280mm / *240mm / 140mm / 120mm (Max. water block height is under 55mm)
Dimensions (WxHxD)	Exclude Handles: 175 x 299 x 403 (mm) / 6.9 x 11.8 x 15.9 (in) Include Handles: 175 x 335 x 403 (mm) / 6.9 x 13.2 x 15.9 (in)		Max. Graphics Card Length	330 (mm) / 13 (in) (Max. graphic card height is under 60mm)
I/O Panel	Type C 3.1 x1, USB3.0 x1, 4 Pole Headset Audio Jack x1, Reset Button		Max. CPU Cooler Height	70 (mm) / 2.8 (in)
Drive Bay	3.5" : *1	2.5" : 2 (2 SSD trays included)	Max. PSU Length	160 (mm) / 6.3 (in)

\*Please choose either of a 280mm/240mm radiator or a 3.5" HDD to install on the top panel.

## PACKING DATA

Product Name	Desert Sand	Iron Gray	Space Silver	Individual Size W/O Packaging Weight (N.Weight)	6.05 (kg)
Product Number (P/N)	385QM90.0003	385QM90.0001	385QM90.0002	Individual Packaging Weight (G.Weight)	7.10 (kg)
EAN CODE	4710483772962	4710483772948	4710483772955	Individual Size W/O Packaging (WxHxD)	175 x 335 x 403 (mm) / 6.9 x 13.2 x 15.9 (in)
UPC CODE	192554003849	192554003825	192554003832	Individual Packaging Size (WxHxD)	265 x 415 x 475 (mm) / 10.4 x 16.3 x 18.7 (in)
JAN CODE	4541995036323	4541995036309	4541995036316		