

- **Style: Simple & Unique**
- **Size: Mid Tower supports up to E-ATX (12" x 12") MB**
- **Material: Steel & Tempered Glass**

Main Features

- **Connection** : Front I/O ports with 4 x USB 3.0 & 1 x USB 3.2 (Gen 2) Type C
- **Cooling Solution** : Pre-installed 120mm Standard Fan x 2
- **Support** : Supports AIO cooling solutions



Specification

Model	The Tower 500	The Tower 500 Snow
P/N	CA-1X1-00M1WN-00	CA-1X1-00M6WN-00
Case Type	Mid Tower	
Chassis Dimension (H*W*D)	608 x 388 x 398 mm (23.9 x 15.3 x 15.7 inch)	
Net Weight	14.8 kg / 32.6 lbs.	
Side Panel	4mm Tempered Glass x 3	
Color	Black	White
Material	SPCC	
Cooling System	Rear(exhaust): 120 x 120 x 25 mm Standard fan (1500rpm, 35.8 dBA) x 2	
Drive Bays	4 x 3.5", 8 x 2.5" or 8 x 3.5"	
Expansion Slots	9	
Motherboards	6.7" x 6.7" (Mini ITX), 9.6" x 9.6" (Micro ATX), 12" x 9.6" (ATX), 12" x 12" (E-ATX)	
I/O Port	USB 3.2 (Gen 2) Type-C x 1, USB 3.0 x 4, HD Audio x 1	
PSU	Standard PS2 PSU (optional)	
Fan Support	Top: 2 x 120mm, 1 x 120mm 2 x 140mm, 1 x 140mm Right Side: 3 x 120mm, 2 x 120mm, 1 x 120mm Rear: 2 x 120mm, 1 x 120mm 2 x 140mm, 1 x 140mm Power Cover: 2 x 120mm, 1 x 120mm 2 x 140mm, 1 x 140mm Bottom(Vertical/Horizontal): 2 x 120mm, 1 x 120mm	
Radiator Support	Top: 1 x 240mm, 1 x 120mm 1 x 280mm, 1 x 140mm Right Side(AIO): 1 x 360mm, 1 x 240mm, 1 x 120mm Bottom(Vertical/Horizontal): 1 x 240mm, 1 x 120mm	
Clearance	CPU cooler height limitation: 275mm VGA length limitation: 325mm(With power cover) 355mm(Without power cover) PSU length limitation: 200mm	

Packaging

Package Information	The Tower 500	The Tower 500 Snow
EAN Code	4713227531016	4713227531023
UPC Code	841163081020	841163081037
N.W	14.8 kg / 32.6 lbs.	
G.W	17.8 kg / 39.2 lbs.	
Carton Size (L x W x H)	460 x 490 x 690 mm / 18.1 x 19.3 x 27.2 inch	
Cuft	5.49	
Container	w/o pallet	
20'	178 pcs	
40'	358 pcs	
40' HQ	442 pcs	



Appearance – Black version



Angle view



Left Side view



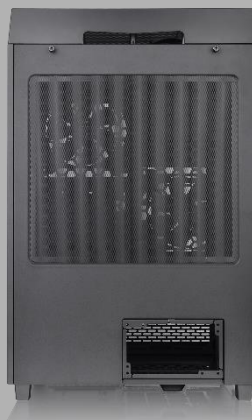
Front view



Right Side view



Internal Structure



Rear view



Top view



Bottom view

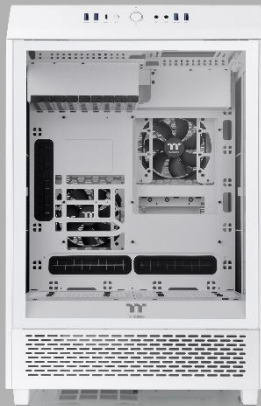
Appearance – Snow version



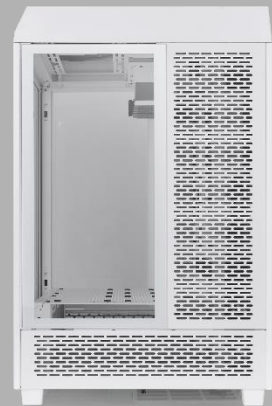
Angle view



Left Side view



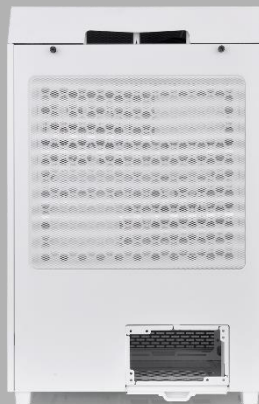
Front view



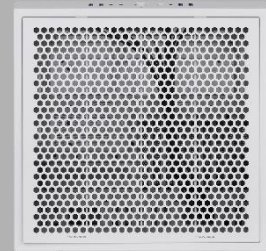
Right Side view



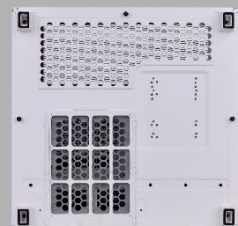
Internal Structure



Rear view



Top view



Bottom view

Unique Design



Panoramic view



Clearance



Maximum supports up to 120mm fan x **8** (w/o side bracket)

Maximum supports up to 120mm fan x **11** (with side bracket)

Maximum radiator supports up to 360mm



Unique Design



Right Side Bracket for Radiator/Fan Installation
(Length limitation: 399 mm)



180° Rotational Right Side Panel
for better ventilation

Structure (External)



USB 3.2 (Gen 2) Type-C x 1

USB 3.0 x 4

HD Audio



4mm Tempered Glass

Window x 3

Preinstall Fan

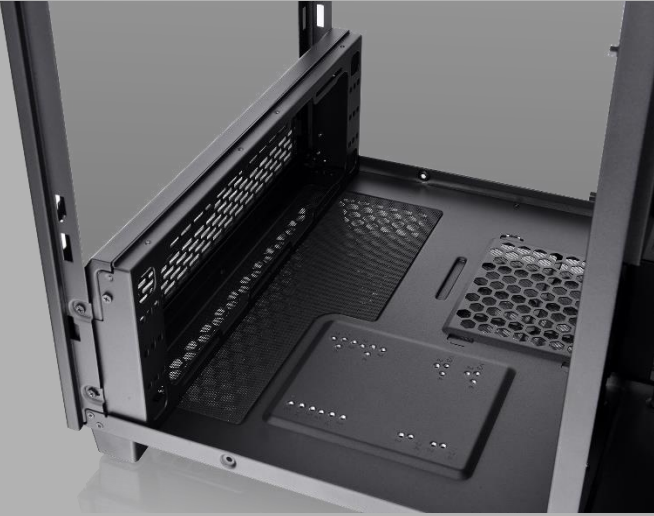
One 120mm rear fan
for CPU ventilation



One 120mm rear fan
for GPU ventilation



Structure (Internal)



Radiator Bracket for Vertical/Horizontal use

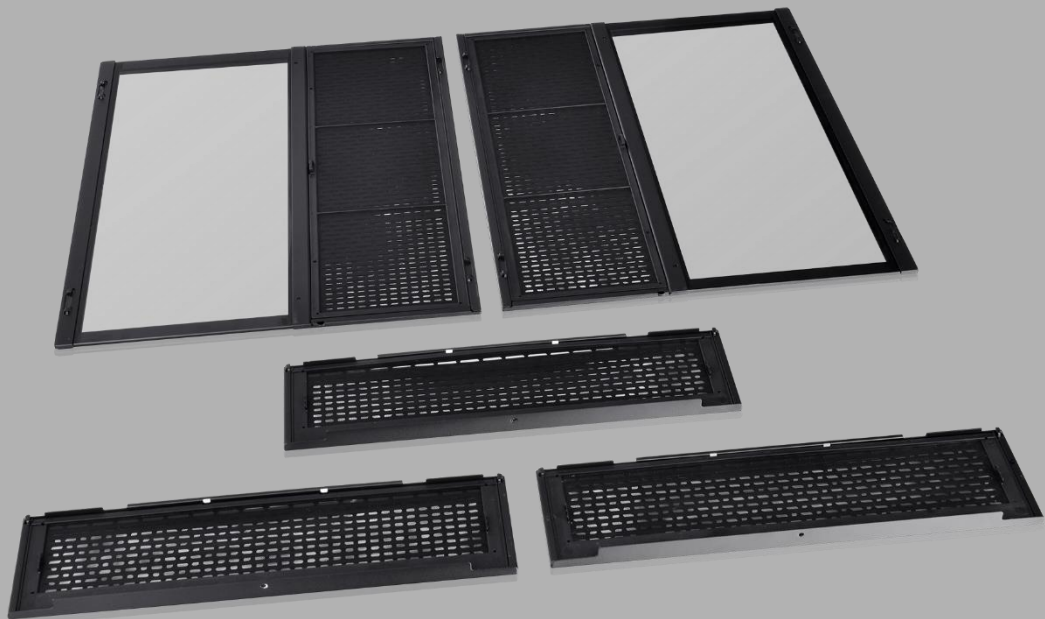
Maximum VGA length: 355mm
(Without Power Cover)



Structure (Internal)

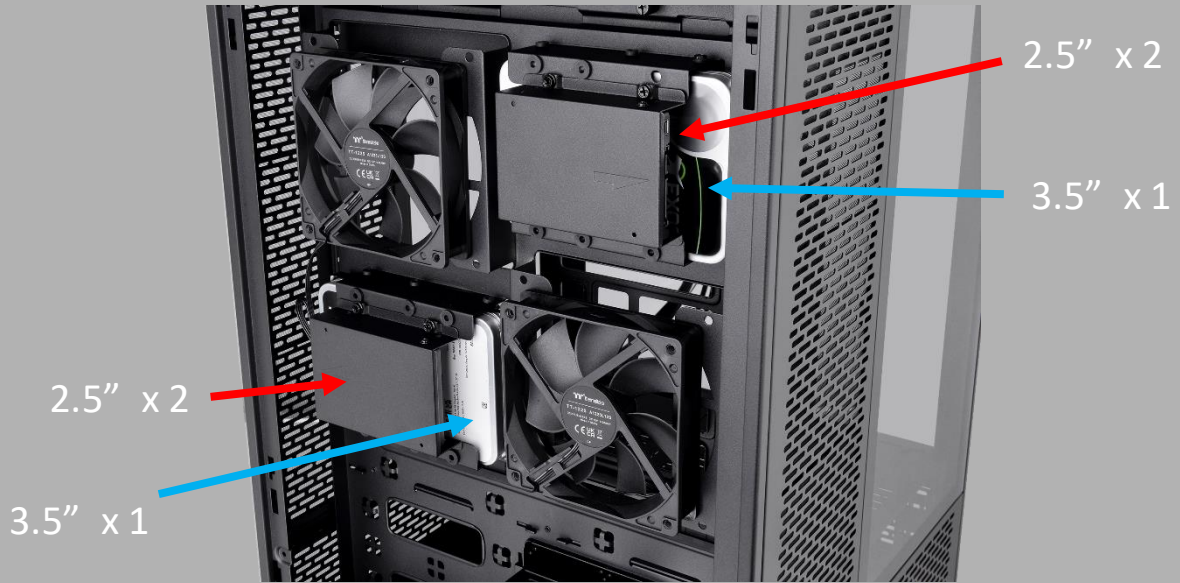


Top filter

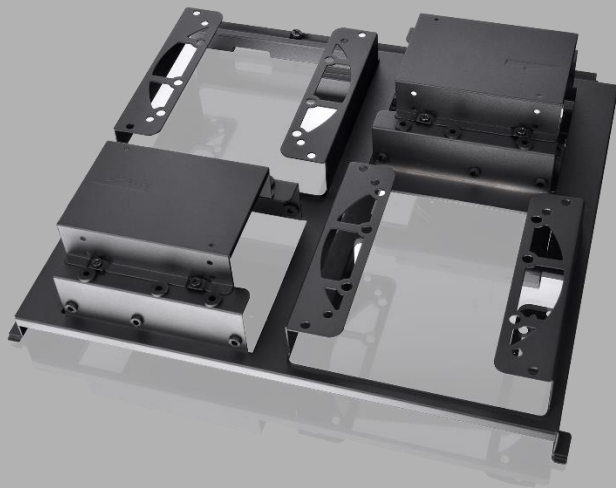


Side panels with dust filters

Structure (Internal)



HDD Bracket for 3.5" or 2.5" device



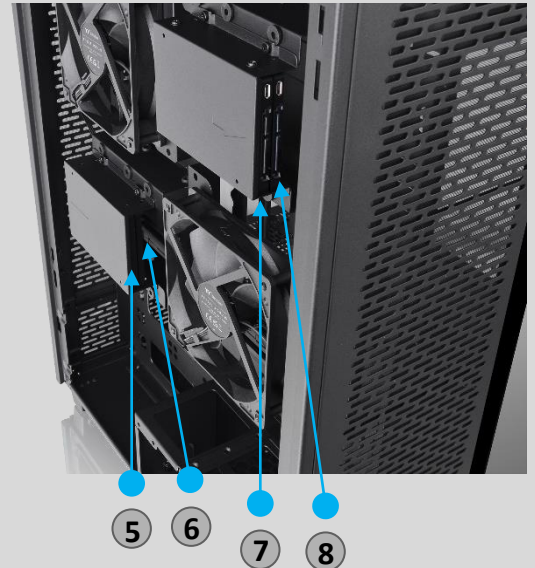
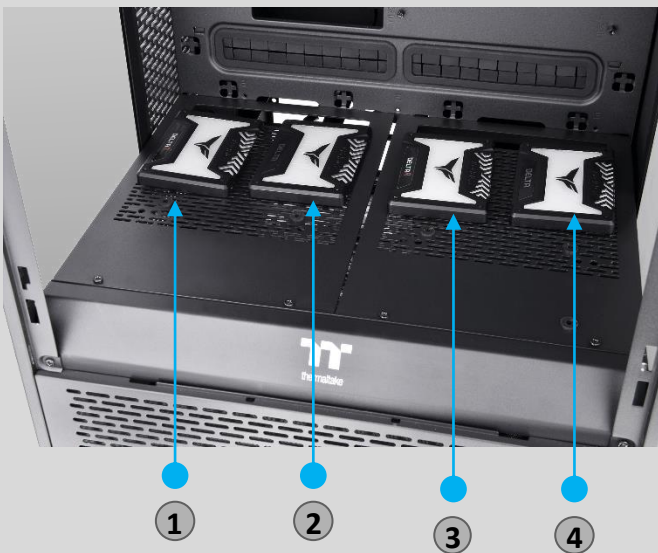
Structure (Internal)



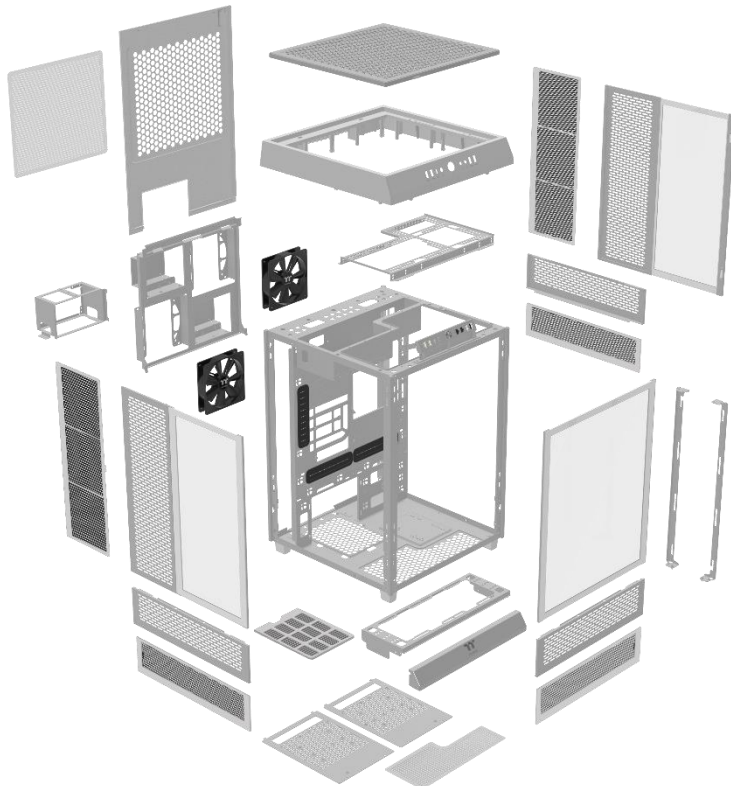
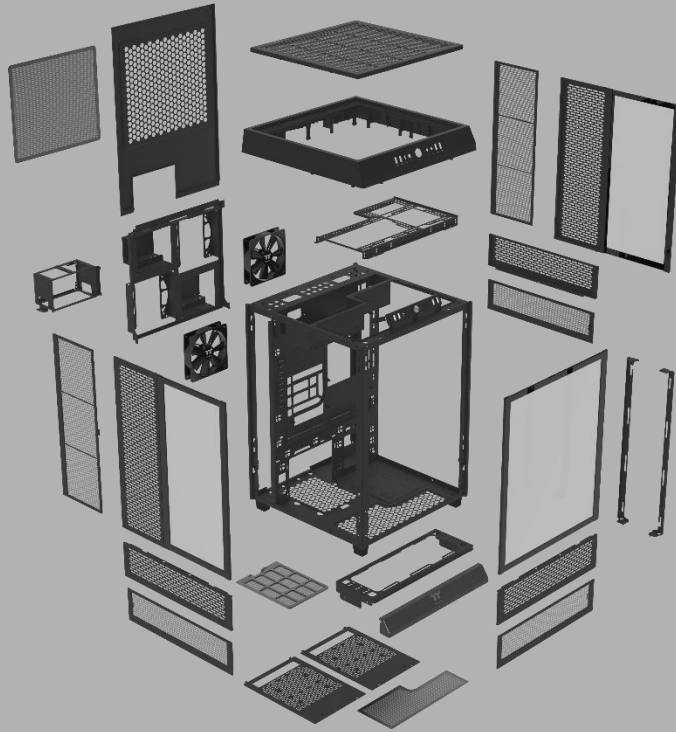
Maximum support
up to 3.5" HDD x 8



Maximum support up to 2.5" SSD x 8

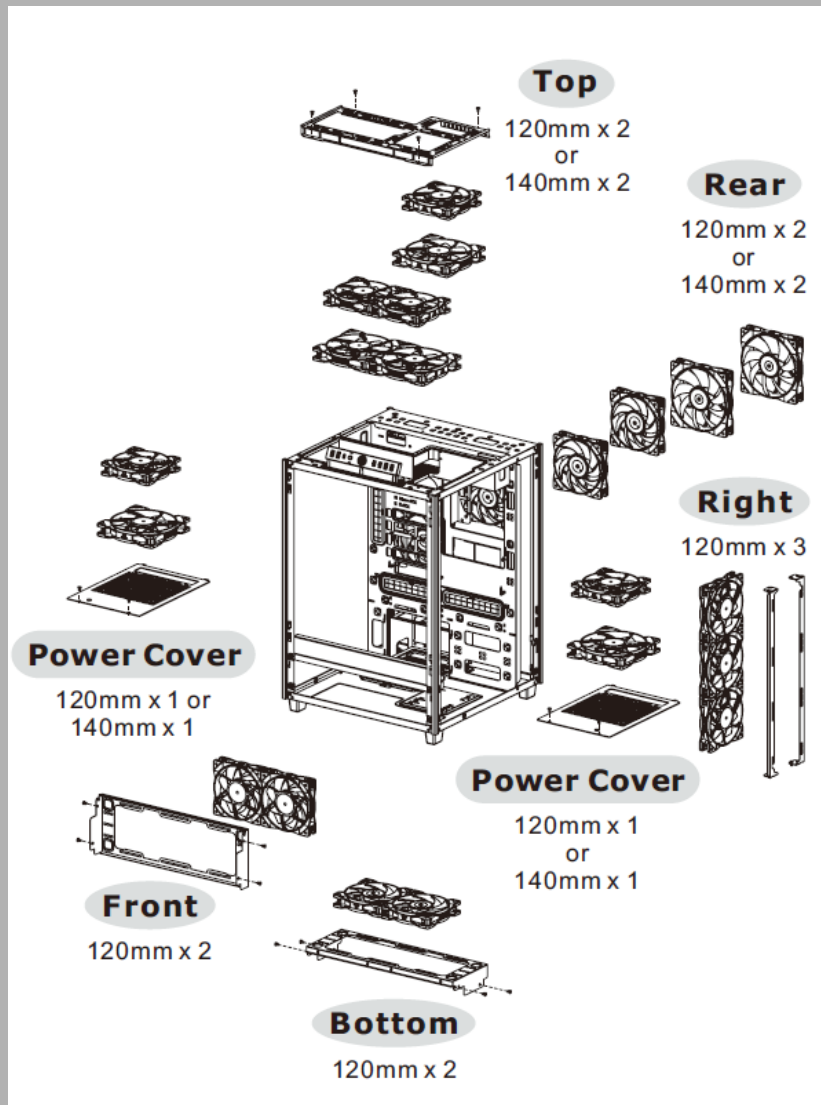


Exploded View



Compatibility List

Fan Compatibility List			
	120mm	140mm	200mm
Top	2	2	-
Right Side	3	-	-
Rear	2	2	-
PSU Cover	2	2	-
Bottom	2	-	-



All-in-One Compatibility

All-in-One Compatibility List

	120mm	240mm	360mm	140mm	280mm	420mm
Top	●	●	-	●	●	-
Right Side	●	●	●	-	-	-
Rear	-	-	-	-	-	-
Bottom	●	●	-	-	-	-

